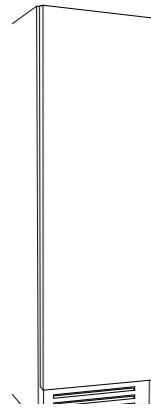




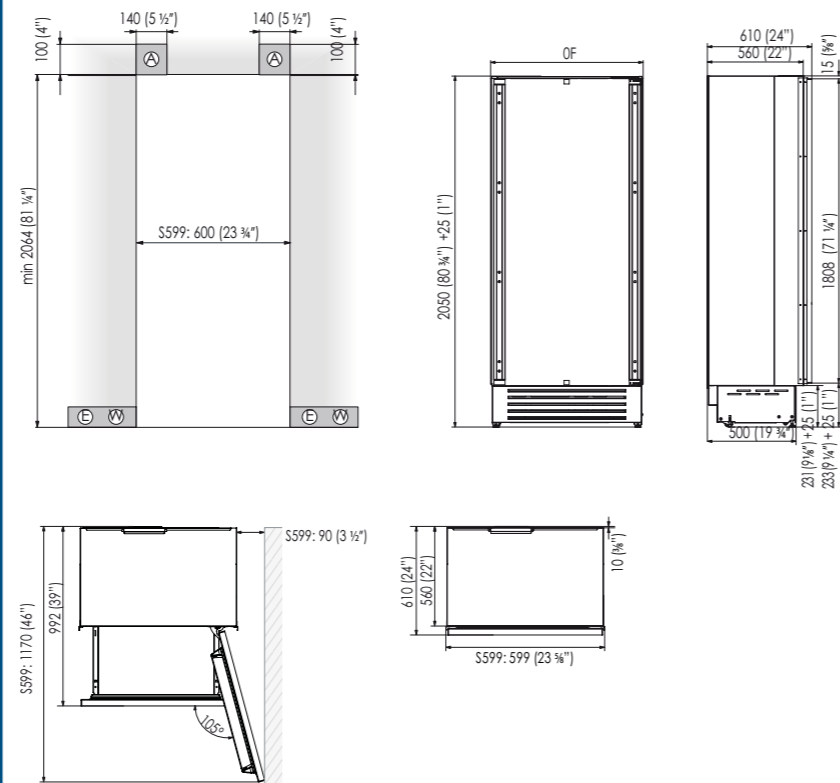
## Integrated Series Model S5990FZ



Dimensions	
Width	587 mm
Height	2050 mm
Depth	610 mm
Weight Net	180 kg
Minimum Niche Height	2064 mm
Door Clearance	1170 mm
Door Opening Angle	<105°
Technical Specifications	
Energy Efficiency Class	A+
Energy Usage	408 Kwh
Noise Level	41 dB
Fridge/Riserva Compart. Capacity	331 l
Fresco/Wine Cellar Compart. Capacity	-
TriMode Compart. Capacity	-
Features	
Freezer Compartment	
Shelves	2
Door Shelves	2
Large Drawers	3
Model Options	
Door Opening Left (3) /Right (6)	3
Ice Maker	✓
Connection data	
Voltage	AC 220-240V 50 Hz
Power supply cable	Schuko 16 A
Length power supply cable	2,0 mt
Water supply tube (female attachment)	3/4"

Available with left hinge (3)

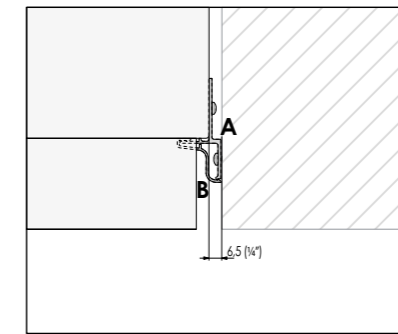
### Installation niche features



### Accessories

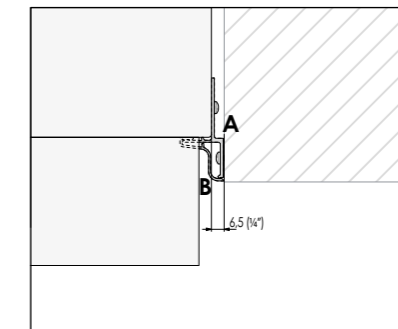
Description	Code
Stainless steel sides	FKK65F
Joining kit - central (Joining brackets, airflow separation included)	KCCIT
Joining kit - central (models with stainless steel sides) Joining brackets, airflow separation included+anti-condensation kit)	KCCITX
Extra Length Anti-tipping Kit	B04000900
Anticondensation Kit adhesive 1,6 cm thick	KAC16
Cleaning kit microfiber cloth and 1 magic sponges	RP00KP
Water filter	RP00FA
Transformer for network integration with alternative energy (photovoltaic and geothermal energy, home automation, etc.)	KITNRG899749
Vertical tubular handle	HV

### Flush installation



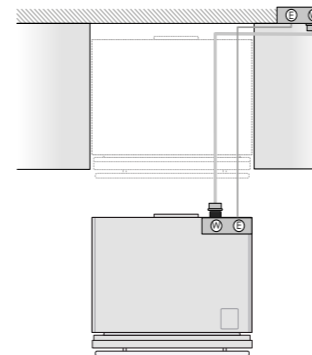
The Lateral Connection Kit (KCLIT/KCLIH/KCLMT/KCLMH) is supplied on all models (except in the unit with stainless steel sides) and consists of a connection element (A) and a aluminium frame (B).

### Prominent installation

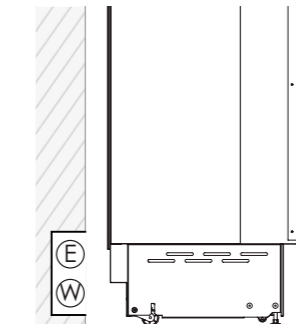


The Lateral Connection Kit (KCLIT/KCLIH/KCLMT/KCLMH) is supplied on all models (except in the unit with stainless steel sides) and consists of a connection element (A) and a aluminium frame (B).

### Electrical and Water connection



### Electrical and Water connection behind the unit



### Panel dimensions

Panels with width ranging between 18 mm (3/4 in) and 28 mm (1 1/8 in).  
Door panels with weight max of 23 kg (51 lb) and drawer panels with weight max of 11kg (25 lb).  
Provide installation of decorative panels during installation of the unit.

Series	Door/Drawer Width A	Door Cutout Width B
599	597 (23 1/2")	327 (12 7/8")

